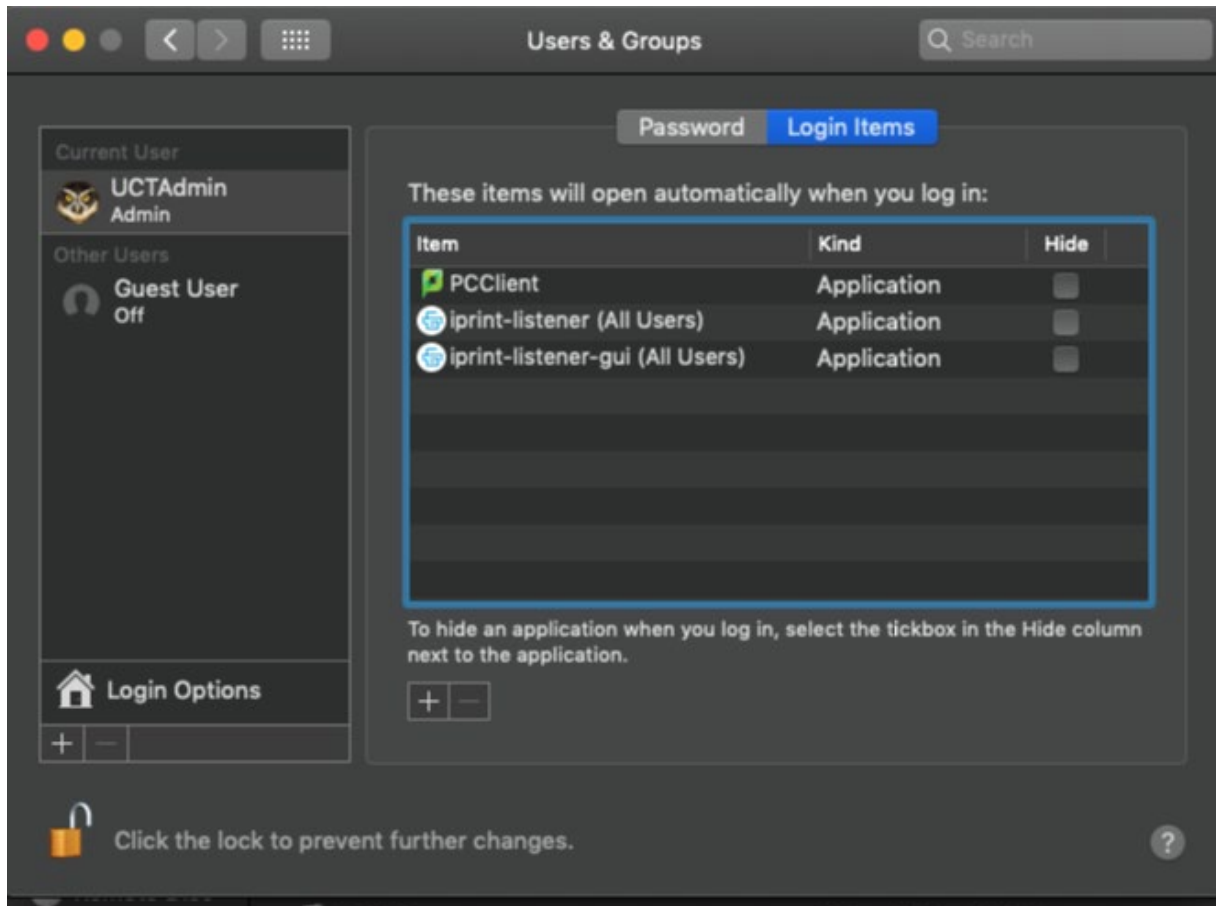


## MAC OSX Papercut software and printer installation

### 1. Download the software

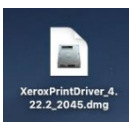
1. To install the Papercut client for macOS, visit <https://ictsdownloads.uct.ac.za>.
2. Use your UCT credentials to log in.
3. Select Apple > Papercut and click on **Papercut\_StaffInstallMAC.zip**.
4. Open the .zip folder and run local install **client-local-install**.
5. When complete a Papercut logon popup will appear. Add the Papercut client to Login Items in Users & Groups.



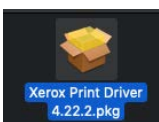
### 2. Install the print driver

Installation of the print driver is covered in [the following video](#).

1. In the zip file you have downloaded, double click on **XeroxPrintDriver\_4.22.2\_2045.dmg**.
2. Once the driver is downloaded, double click the installer.



3. The image will mount. Double click the installer icon.



4. Click **Continue** to move through the installation wizard.
5. When prompted, click **Agree** to accept the software license agreement.
6. Click **Install**.
7. Enter your local administrator name and password. Click **Install Software**.

#### Note:

During the printer driver installation, the installer will try to **Discover Printers**.

- Skip this by clicking **Continue**.
  - When the **Print Queue Not Created** pop-up appears, click **Continue** again.
8. Click **Close**.

### 3. Install the printers

- This is covered in [the following video](#).
- You will need to install 2 printers, by following these steps twice.

Under **Advanced Options**, the details you need to enter are:

- **Type:** Windows printer via spools or Windows (MacOSX 10.6 or higher)
- **Device (MacOSX 10.14, 10.13): Another Device** or **Peripheral (MacOSX 10.7, 10.8) : Other peripheral**
- **URL :** **smb://srvwinppc002.wf.uct.ac.za/UCT\_XRX\_Follow** and for the second printer, **smb://srvwinppc003.wf.uct.ac.za/UCT\_XRX\_Follow**
- **Name:** UCT\_XRX\_Follow02 (and for the second printer, UCT\_XRX\_Follow03)
- **Location:** leave this blank
- **Use:**
  - Choose **Select Software**
  - **Select Xerox WorkCentre 7855, 4.22.2**

### 4. Changing the default settings on your printer

- By default, your printer is set to print in colour. To learn how to change the default settings to black and white, [watch this video](#).